



米柯斯尔橡塑机械
MIXER INDUSTRIAL

国内工厂 Domestic manufacturing plants:

1. 南京 Nanjing
2. 无锡 Wuxi
3. 宁波 Ningbo
4. 上海 Shanghai
5. 泰兴 Taixing

国外办事处 Overseas Representatives & Partners location:

1. 印度 Mumbai, India
2. 土耳其 Istanbul, Turkey
3. 马来西亚 Selangor, Malaysia
4. 印度尼西亚 Bandung, Indonesia
5. 阿根廷 Buenos Aires, Argentina
6. 波兰 Jozefow, Poland
7. 巴基斯坦 Sialkot, Pakistan

南京米柯斯尔橡塑机械有限公司
Nanjing Mixer Industrial Co., Ltd

地址: 南京建邺区云锦路58号

FAX: 0086-25-52631876

E-mail: info@nanjingmixer.com

TEL: 0086-25-52631617

MOB: (+0086) 15195787870

Website: www.nanjingmixer.com



南京米柯斯尔橡塑机械有限公司
Nanjing Mixer Industrial Co., Ltd

橡塑机械设备解决方案专业供应商
Working for Rubber & Plastic Machineries Solution from China to World



公司简介 COMPANY INTRODUCTION

南京米柯斯尔橡塑机械有限公司，坐落于闻名全国的制造业基地，六朝古都江苏南京。致力于橡塑机械的制造与销售，客户遍布世界各地。我们在该领域有着10多年的研发生产经验，拥有5家专业化生产厂，数十位行业专家，200多名富有经验的生产工人，各种数量可观的精密数控加工机床，所有这些确保我们所生产的每台设备每个细节性能可靠，质量合格，并按时交付客户。

另外，我司还向海外客户从中国采购商品提供一条龙服务，包括进出口，客户到达接送，陪同出差考察，翻译，工厂评估，采购咨询服务，订单跟进，质量控制，现场验货，发货，售后协调等一揽子服务。我们所做工作的目的是确保海外客户在中国能快捷的采购到物有所值的产品，并无后顾之忧。

高品质是我们生存之本；合理的价格，优良的服务，和对客户责任意识是我们赢得广阔前景的关键。我们希望能与世界各地的客人，在互利共赢的基础上，携手合作，共创未来！



Nanjing Mixer Industrial Co., Ltd is founded in Nanjing, Jiangsu Province, one of the most famous and advanced manufacturing base in China, specializing in manufacturing and supplying rubber&plastic machines to our customers all over the world. We have more than 10 years of experience in this field, owning 5 manufacturing plants, mostly are located within the scope of 300 KM around Shanghai, having dozens of experienced engineers and more than 200 hundred skilled workers, as well as a considerable number of precise, digital-control, advanced processing machine tools. All ensure every part and details of our machines with good performance and qualified running test before delivery to our customers on time.

Besides, we also supply extra package solutions service for overseas customers who buy goods from China, including import and export service, arrivals pick up and travel accompany and translation in China, factory evaluation, consulting service for sourcing, order follow up and QC, on-site inspection in factory, shipment, after sale service coordination. All the work we do is to make sure the customers from another country are able to buy the satisfied quality products at reasonable price in safe and convenient environment from China.

High quality lets us live. Reasonable price, excellent service and sense of responsibility for customers let us win promising future. We are eager to start and sustain the cooperation with the customers all over the world at the basis of mutually beneficial win-win situation.





加工一角 One Machining Corner



加工一角
One Machining Corner



加工一角
One Machining Corner

产品车间展示 Some Machines In Workshop



捏炼机.装配车间
One Assembly Workshop for Kneader



开炼机装配一角
One Assembly Corner For Open Roll Mill



预成型机一角
One Corner For Rubber Preformer (Barwell)



装配一角压延机
One Assembly corner for Calender



硫化机一角
One Corner For Hydraulic Press



平板机一角
One Corner for Platen Press



双螺杆挤出机
Workshop For Twin Screw Extruder



开片机一角
A Workshop for Bandknife Splitter

发货瞬间 The Moments Of Delivery



密炼机发货
Dispersion Kneader Shipment



EVA开片机发货
EVA Splitting Machine Shipment



开炼机发货
Mixing Mill Delivery



硫化机装箱发货
Platen Vulcanizing Press Shipment



密炼造粒生产线发货
Kneader&Extruder Pelletizing Line Shipment



双螺杆挤出机组发货
Twin Screw Extruder Line Shipment



磨粉机发货
Shipment for EVA Grinding Machine



捏炼机装车
Kneader Delivery



预成型机发货
Rubber Preformer Delivery

拜访国外客人 Visit Cutomers Abroad





强力加压翻转式密炼机 Dispersion Kneader



翻转式密炼机 (气压)
Dispersion Kneader
(pneumatic ram)

液压型: Hydraulic type Kneader
(Hydraulic tilt and hydraulic ram)

转子结构Rotor Structure

描述:
E. V. A. 发泡鞋底、橡胶鞋底、TPR鞋底、橡胶滚轮、橡胶海绵、轮胎、运动球类、橡皮圈、橡皮管、橡皮带、橡皮迫紧、瓶塞、油封、防震橡胶、粘性胶带、松紧带、色母、油墨、电器橡胶零件、各类汽车橡胶制品及各式化学工业混合原料。

- 密炼机特性:
1. 本机装置全自动温度及时间控制系统, 操作精确、简便、混炼可达最佳分散及均匀度。
 2. 混合槽为可倾倒式, 搅拌轴防漏采用干式机械轴封, 使清洗换色简便容易。
 3. 每次混炼时间约需6-10分钟, 工作效率为滚轮机的两到三倍。
 4. 此密封式混合槽除可确保混合物品外, 并可防止环境污染。
 5. 机器坚固耐用, 故障率低, 安装操作保养容易, 用电节约。

Main application:
Rubber&plastic industry, such as TPR, EVA, Rubber sole, Rubber Roller, Hoses Belts, Sponges, Vibration Insulator, Elastic Cord, Sealing Materials, Tire, Tapes, Master Batches, Pigment Ink, Automobile Electric Rubber Parts, Chemical Industry Compounds, etc.

- Feature for Dispersion Kneader:
1. An automatic temperature and time control system to provide a 100% mixing effect.
 2. Easy to clean chamber and changing colors.
 3. In 6~10 minutes/batch of output equivalent to 2 units of mixing mill.
 4. Pressurized and sealed mixing chamber to provide high mixing performance and prevented environmental pollution.

规格型号Technical Specification:

型号 Model		X(S)N-3	X(S)N-10	X(S)N-20	X(S)N-35	X(S)N-55	X(S)N-75	X(S)N-110	X(S)N-150	X(S)N-200
有效工作容积 Effective Mixing capacity	L	3	10	20	35	55	75	110	150	200
主电机Main power	KW	5.5	15	30	55	55/75	90/110	160/200	220	280
翻转电机 Brake Motor	KW	0.37	0.75	1.5	2.2	3.0	4.0	5.5	5.5	7.5
翻转角度Tilting Angle	°	110	110	110	140	140	140	140	140	140
空压机 Air compressor	KW	1.5	2.2	3.0	5.5	7.5	10	10	15	20
集尘器 Dust Collector		HLL-10	HLL-10	HLL-10	HLL-10	HLL-15	HLL-20	HHL-30	HHL-30	HHL-30
冷却水压Cooling Water	MPA	0.2-0.4	0.2-0.4	0.2-0.4	0.3-0.4	0.3-0.4	0.3-0.4	0.3-0.4	0.3-0.4	0.3-0.4
蒸汽压力Heating Steam	MPA	0.5-0.8	0.5-0.8	0.5-0.8	0.5-0.8	0.5-0.8	0.5-0.8	0.5-0.8	0.5-0.8	0.5-0.8
电加热功率Electric Heater	KW	4	6	9	12	15	18	24	28	32
设备重量Machine Weight	KG	1200	2300	4500	6500	7800	10500	14500	19500	22500
设备尺寸Overall Dimension	CM	196x970 x182	220x135 x215	250x148 x250	310x179 x271	342x214 X280	380x214 X318	440x276 X377	462x300 X415	470x340 X430

下落式密炼机 Banbury Mixer



Production Type:

Laboratory type:

用途: 该机用于橡胶、塑料的塑炼及各种胶料、塑料的混炼。

特点:

1. 混炼室为夹套结构, 加热冷却速度快, 效果好, 内壁镀硬铬, 使用寿命长。
2. 转子顶端及二侧堆焊硬质合金, 全部工作表面镀硬铬, 耐磨美观, 转子内腔可通冷热介质。
3. 顶部采用液压恒压力式密封结构, 高压油润滑, 断油自动报警, 密封效果好, 寿命长。
4. 机器超载时间过长, 顶栓自动减压, 保护机器, 延长使用寿命。
5. 上下顶栓工作表面均镀硬铬, 表面耐磨美观, 下顶栓内腔可通冷热介质。
6. 卸料门采用双齿条式液压油缸, 直线油缸锁紧, 工作平稳, 定位准确。
7. 采用双输出轴硬齿面减速机, 并采用齿轮联轴器或十字式万向联轴器转动, 传动平稳效率高, 噪音小, 使用寿命长。

Application:

It is used for rubber plasticizing, stock mixing.

Structure features:

All of inside wall, discharge door, ram are of drill hole cooling, and rotor is of hollow spray cooling.

Contacting faces with stock such as mixing chambers inside wall, discharge door, ram are received hardening treatment.

Rotor bearing is of rolling bearing.

Axial seal of rotor is adopted with hydraulic seal, and with adjustable seal ratio.

Operating of the discharge door is driven by the double-rack tilting hydraulic cylinder and with plate-inserted or crank locking.

The transmission system may adopt a dual-output hardened-gear speed reducer, and used with gear coupling (joint) or the cross universal coupling drive, the transmission system is structured with stationary state, low noise, high efficiency and long-service life.

型号Model 项目Item	X(S)M-1.5	X(S)M-50	X(S)M-80	X(S)M-110	X(S)M-160	X(S)M-250/20	X(S)M-270	X(S)M-370	
密炼机总容积(L) Total volume	1.5	50	80	110	160	250	250	395	
填充系数 Filling factor	0.6-0.8	0.6-0.8	0.6-0.8	0.6-0.8	0.6-0.8	0.6-0.8	0.6-0.8	0.6-0.8	
转子转速 (r/min) Rotor speed	0-80	4-40(40)	4-40(40)	4-40(40)	4-40(30)	20	4-40	6-60	
压砣最大压力 (MPa) Max ram pressure	Max0.3	0.27	0.37	0.58	0.5	0.24	0.52 0.6 (液压 Hydraulic)	0.54 0.6 (液压 Hydraulic)	
主电机功率(KW) Main motor power	37AC	90DC (95AC)	200DC (210AC)	250DC (240AC)	355DC (355AC)	240AC	1250DC (1250/ 1500AC)	2x1250DC	
外形 尺寸	长L	2,700	5,560	5,800	6,000	8,900	7,500	7,450	11,150
	宽W	1,200	2,700	2,500	2,850	3,330	3,900	4,140	4,960
	高H	2,040	3,250	4,155	4,450	6,050	4,730	6,270	7,040
设备总重(kg) Total weight	2,000	16,000	22,000	29,000	36,000	33,500	50,000	78,000	



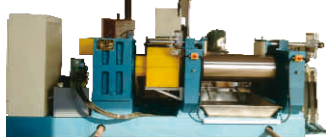
开放式炼胶机 Open Two Roll Mixing Mill



带翻胶机 Mill with Stock Blender



紧凑型 Compact type Mill



普通型 Common Mill



实验型 Laboratory mill

用途：用于橡胶或塑料的塑炼混炼以及混炼后橡胶的加硫化剂压片、出片。
结构：采用大小齿轮驱动（老式），单出轴（新式经济型）和双出轴（新式高配型）三种结构。

特点：

- 1.具有故障率低，安全可靠，急停反转的功能。减速机噪音低，震动小，运行平稳等。在此基础上，还可根据客户的要求增加不同的配置，已实现自动化生产。
- 2.前后辊筒均采用合金冷硬铸铁，工作面硬度HS70±2。结构：采用中空型。通过端面的旋转接头，对辊筒进行加热或冷却。附法兰式旋转接头及进出水橡胶软管。
- 3.机座采用优质型钢焊接，经回火消除应力处理后进行精密机加工。
- 4.电气控制：接触器、空气开关等主要电气元件采用国内外知名品牌。

Application:

Used for rubber&plastic mixing, sheeting.

Structures: 1. Big&small gear transmission, nylon bushing (old style).

2. Single output shaft, hard face gear reducer, bearing (new and economic)

3. Double output shaft, universal coupling (high components style)

Features:

Tailored structure, easy to operate.

There are many speeds and speed ratios available, which can satisfy most customers' formula and processing requirements.

Frame and base, looking very nice, are welded and treated by annealing for stress relieving.

Chilled alloy cast iron roll is abrasion resistant, working surface hardness reach HS70±2. The speed reducer is the hard-tooth surface gear reducer of Class 6 precision, which has long service life and low noise.

Perfect emergency stop device can ensure the safety of personnel and equipment.

The seal structure with special design can eliminate the leaking phenomenon of lubricating oil.

Stock pan is easy to clean up with dislodging device.

Human nature designed operating system reduces labor intensity.

Modular structure offers various structures for customers' option.

The flexible design system can satisfy customers' special design requirements within the shortest time.

A load test running will be made to the assembled equipment in our company to save debugging time for customers.

型号 Model	X(S)K-160	X(S)K-250	X(S)K-360	X(S)K-400	X(S)K-450	X(S)K-550	X(S)K-660
辊筒直径 Diameter of rolls	160	250	360	400	450	550	660
辊筒工作长度 Working length of roll	320	620	900	1000	1200	1500	2130
前辊线速度 Working speed of front roll	8.95	14.9	17.4	19.3	23.1	28.6	30
辊筒速比 Fraction ratio of rolls	1:1.35	1:1.1	1:1.27	1:1.27	1:1.27	1:1.29	1:1.05
辊筒最大间距 Max.gap(mm)	5	8	10	10	10	15	15
间距调节方式 Nip regulating way	手动花柄 Manual	手动花柄 Manual	手动花柄 Manual	手动/电动 Manual or Electric	手动/电动 Manual or Electric	手动/电动 Manual or Electric	电动 Electric
产量 (Kg) Batch capacity	1-2	10-15	20-15	25-35	30-50	50-60	120-140
电机 Motor	功率Power	5.5	15	30	45	55	90/110
	电机转速 Motor Speed	1440	730	980	740	980	740
减速机Reduction gear box	密闭式硬齿面减速机 Full closed type hardened gear speed reducer						
减速机速比Reduction ratio	43	35	49.7	38	47.2	35.6	126.2
外形尺寸 Overall dimension (mm)	1120×920 X1295	3400×1270 X1620	4140×1770 X1700	4490×1700 X1750	5570×1900 X1750	6290×2330 X1780	7500×2630 X2060
重量 Weight (kg)	1100	4200	7600	9000	11500	20000	26500

橡胶预成型机 Rubber Precision Preformer (Barwell Machine)

橡胶预成型是一种高精度高效率制胶胚设备，能生产高硬度，多种异形胶胚，且胶胚精度高，无气泡，适合生产油封、网球气门嘴、鞋底、医药、农业造粒等客户。

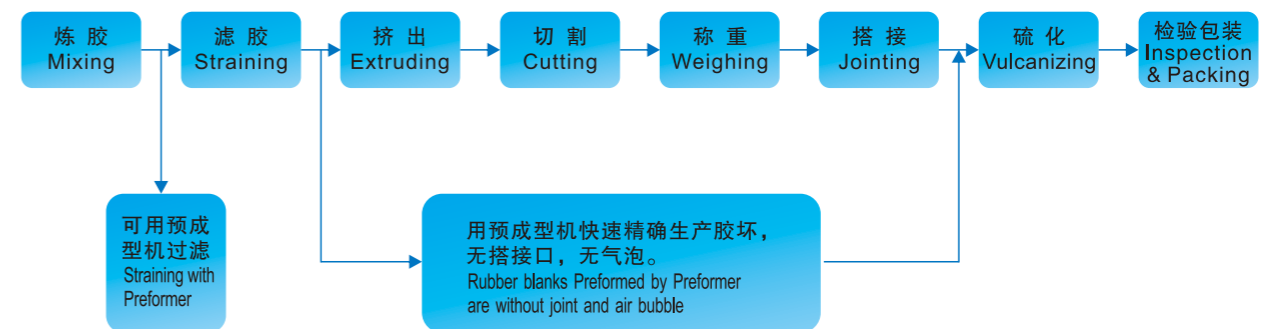
橡胶精密预成型是一种柱塞式为结构的机器，主要由挤出装置、液压系统、真空系统、水循环系统、电加热系统、气动系统和切割系统以及电控系统组成。

Rubber Preformer, also called Barwell, is a high precision and high efficiency equipment to produce rubber blank, capable of producing high hardness, a variety of special-shaped rubber blank, and the rubber blank features high precision, no bubbles, suitable for the production of oil seals, valve tennis, rubber sole, rubber stopper, rubber for medicine, etc.

The machine is plunger type structure, primarily composed by the extrusion apparatus, the hydraulic system, vacuum system, water system, electric heating system, pneumatic system and electric control system and the cutting system.



规格型号 Technica Specification:



项目/Item	JYZ150	JYZ200	JYZ250
料筒内径/Barrel Diameter	150 mm	200 mm	250 mm
总功率/Total Power	16 kw	16 kw	19kw
油缸最大压力/Max.Oil Cylinder Pressure	36.8 Mpa	20.7 Mpa	17 Mpa
料筒最高温度/Max. Barrel Temperature	95℃	95℃	95℃
口型最大直径/Max. Die Diameter	80 mm	125 mm	190 mm
胶胚重量范围/Rubber Blank Weight Range	0.3 ~ 100 g	0.3 ~ 200g	0.3 ~ 2000g
胶胚重量精度/Rubber Blank Weight Precision	± 1.0	± 1.0	± 1.0
一次装胶量/Feeding Capacity Per Batch	8 ~ 10 kg	20 ~ 25 kg	60 ~ 70 kg
切刀转速/Blade Rotation Speed	35 ~ 300 R/M	35 ~ 300 r min	24 ~ 300 r min
外形尺寸/Dimension (L × W × H)	4 × 1.1 × 1.7 m	4 × 1.1 × 1.7 m	5 × 1.1 × 1.7 m
重量Weight	2.8 T	3 T	4T



水冷却输送机 Water Cooling Conveyor



冷却输送机
Water Cooling Conveyor

产品介绍/Introduction:

水冷式冷却输送机是专为解决胶坯粘连、变形而设计的预成型机配套辅机。通过冷却水或冷却溶液使胶坯降温，再经过强制风冷，使胶坯干燥、稳定。该机特点是全程不锈钢网帘，可调控运行速度，配合成型机的所有切割速度。

Water cooling conveyor is an auxiliary machine of the precision preformer to avoid stickiness and deformation of the rubber blanks. After cooling down with water cooling solution, and then with forcible cooling wind, the rubber blanks will become dry and solid. The feature of the machine is that the running speed can be adjusted by the stainless steel net curtain during the whole process to go with the cutting speed of the performer.

规格型号 Technical Specification :

项目/Items	单位Unit	
型号/Model		LSS650
倾斜输送 (不锈钢) /Sloping conveying (stainless steel)		
输送宽度/ Conveying width	mm	450
胶胚输送距离 (水中) /Conveying width (in water)	mm	700
输送速度/Conveying speed	m/min	8.3
冷却风量/Conveying speed	m ³ /h	1620
卧式输送/Horizontal conveying		
输送宽度/Conveying width	mm	450
输送速度/Conveying speed	m/min	1.6~3.2
层数/Working layer		3层 / 3 layers
水槽尺寸/Water tank dimension (L x W x H)	mm	1460 x 800 x 270
冷却风量/Volume of cooling air	m ³ /h	10320
外形尺寸/Dimension(L x W x H)	mm	5200 x 950 x 1740
总功率/Total Power	KW	1.8
重量/Weight	T	0.8

旋转振动式冷却输送机Vibracool Conveyor for Rubber Performer



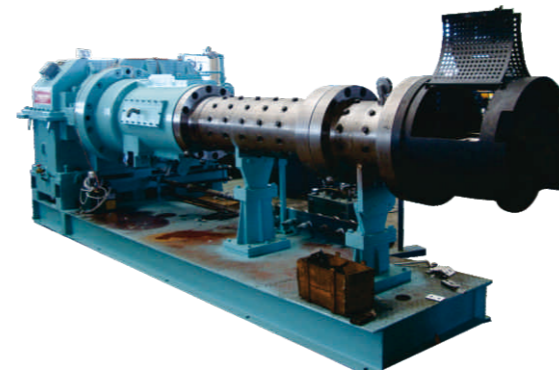
振动输送机
Vivracool Machine

旋转冷却输送机是专为解决胶坯粘连、变形而设计的预成型机配套辅机。该机与胶料接触部位均采用不锈钢材料。机器的特点是占地面积下，冷却距离长，胶坯冷却、干燥效果突出。对轴密封件、油封、O形圈及片状等胶坯的效果更加突出。小重量的胶坯可直接采用风冷。重量较大或热量较大的胶坯，还可通过外接水箱进行循环水冷却，强化胶坯冷却效果。

Vibrating cooler/ cooling conveyor is a space-saving type cooling conveyor specifically developed for the effective cooling, separation and drying of hot rubber preformed for the Rubber preformer/extruder.

项目/Items	单位/Unit	LSX950
旋转槽直径/Groove diameter	mm	950
旋转槽宽度/xGroove width	mm	200
旋转槽高度/Groove height	mm	1500
物料运行距离/Materia conveying distance	mm	35000
螺旋节距/Helica pitch	mm	100
进料口宽度/Feeding width	mm	650
进料口高度/Height of feeding mouth	mm	320
输送速度/Conveying speed	m/min	6~8
电机功率/Motor power	KW	0.75*2

橡胶挤出机 Rubber Extruder



机筒-螺杆-喂料辊
Barrel-Screw-Feed Roller



摩托车轮胎挤出机
Duplex Extruder for Motorcycle Tires

介绍：主要用于橡胶半成品的挤出。根据用户的需要配上不同的机头，可用于胶管、胶条、电线电缆、医用瓶塞、轮胎各种半成品的挤出。Our Extruders are usually designed to extruder rubber semi-finished articles for tire industry, such as sidewalls, treads or apex. They can also be equipped with different heads and become perfect for profile extrusion. Different sizes and configurations are possible: type of head, die size, clamp type

规格型号 Technical Specification :

直径Diameter (mm)	长径比L/D	功率 Power (KW)	转速 Speed (RPM)	产量 Output (Kg/h)
XJD-60	(6-16):1	11-37	80	120
XJD-90	(10-20):1	30-75	60	350
XJD-120	(10-18):1	45-110	50	650
XJD-150	(10-18):1	75-255	45	1200
XJD-200	(10-18):1	185-355	28	2200
XJD-250	(4-12):1	185-500	26	3000



橡胶压延机 Rubber Calender

介绍/Introduction:

橡胶压延机主要供橡塑制品厂,用于压延胶布及纺织物贴胶、擦胶出片之用。

Rubber calender is mainly used for rubber products factory in the field of rolling rubber tape adhesive or textiles, eraser with the film.



规格参数 Technical Specification:

规格型号/ Model	辊径x辊长 Roller dia x Length (mm)	中辊线速度 Mid-roller Liner speed (m/min)	最大压延厚度 Max. thickness for Calendering (mm)	压延宽度 Calendering Width (mm)	电机功率 Motor Power (kw)	外形尺寸 Dimension (mm) (LxWxH)	重量 Weight (t)
XY-3I 1120	360x1120	7.5-22.5	≥0.20	900	13.3/40	6050x1500x2240	11.6
XY-3I 1400	400x1400	8.8-26.39	≥0.20	1200	18.3/55	5600x1410x2385	15
XY-4F1120	360x1120	7-21	≥0.20	900	18.3/55	6100x1660x2330	13
XY-4F1400	400x1400	8.8-26.39	≥0.20	1200	25/75	6350x1850x2490	18
XY-3L1120	360x1120	2-20	≥0.20	900	37	5500x1700x2300	11.7
XY-5T 635	240x635	9	≥0.50	550	7.5	1400x1000x1870	2
XY-5T 700	230x700	1.5-13	≥0.50	600	7.5	3600x1620x1030	3.5
XY-4F1730	610x1730	5.4-54	≥0.15	1500	180	7050x4110x3750	64
XY-4F1830	610x1830	6-60	≥0.10	1600	67x4	8250x3860x4640	68
XY-4F1730	610x1730	5-50	≥0.15	1500	75x4	8010x4738x4837	65
XY-4S2030	660x2030	5-50	≥0.15	1800	110x4	8850x5080x5210	73
XY-4S2500	160x2500	5-50	≥0.15	2200	160x4	12280x6500x5900	90
XY-4S3400	900x3400	5-50	≥0.15	3100	200x4	17000x8630x9350	145

双螺杆挤出压片机 Twin Screw Extrusion Sheeting Mill

简介/Introduction:

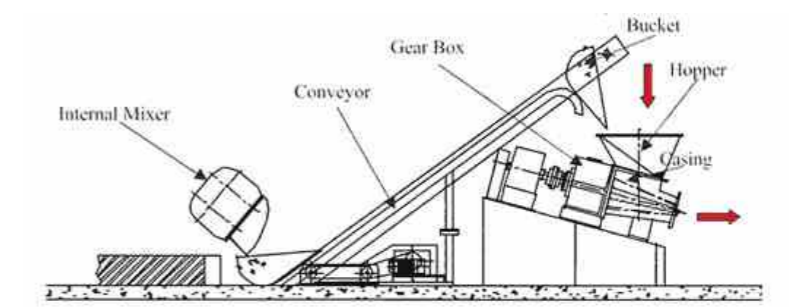
双螺杆挤出压片机

用途: 用于橡胶密炼机的下配套, 将塑炼胶、母炼胶、终炼胶连续挤出与下片。

结构特点: 能耗低、结构简单、自洁性好、使用寿命长、自动化程度高、操作简单、噪声低、无环境污染、占地面积小、维修方便等。

Application:

This machine is used for extruding plasticized rubber, master batch and final batch into sheeting.



项目/Item	Model	斜置式锥形双螺杆挤出压片机 Conical Twin Screw Extrusion Sheeting Mill		双螺杆挤出压片机 (平行式) Parallel Twin Screw Extrusion Sheeting Mill		
		XJY-S330Z	XJY-4S50Z	XJY-S240	XJY-330	XJY-450
适应密炼机规格 Applicable Banbury Mixer		270	400	190	270	400
挤出部分 Extruder Part	螺杆直径 Screw Diameter mm	300/740	416/936	240	330	450
	螺杆转速 Screw Speed r/min	2.4~24	2~20	3~27	3~27	2.2~22
	挤出机功率 Motor Power kw	132	220	75	110	160
压片部分 Sheeting Part	挡胶板宽度 Stock Guide Widthe mm	650	750	600	650	700
	辊筒直径 Roll Diameter mm	410	500	300	410	510
	辊筒辊距 Roll Gap mm	3~10	3~12	3~10	3~10	3~10
	辊筒转速 Roll Rotation r/min	3~27	3~27	3~27	3~27	3~27
	压片机功率 Sheeing power kw	132	220	75	110	160
生产能力 Capacity t/h		9	11	4	6	9
设备重量 Weight t		~30	~50	~14	~26	~38
外形尺寸 Dimension (L*W*H) mm		4070*4470*2480	4630*4850*2760	3050*2950*2200	4000*4300*2480	4600



橡塑发泡硫化机 Foaming Vulcanizing Press

设备用途:

1、EVA、PE、PVC、SBR中高档材料的发泡
如鞋材、地垫、运动防护材料、沙滩鞋底、保温材料等。

设备特点:

- 1、自动控制，自动排气，适合高品质产品的制造。
- 2、合模速度快，能长时间保持高压，确保质量品质。
- 3、特殊设计的快卸阀，开模速度特别快。
- 4、可根据制品的特性及工艺调整和开模速度和时间。
- 5、热板特殊设计，表面温度均匀。
- 6、辅助油缸提升，节约能耗。
- 7、自动控制和手动控制相结合。

The Vulcanizing press is used for foaming EVA, PE, rubber, which is widely used in shoe material manufacturing, foaming floor glue, thermal keeping material, luggage liner, sporting prevention material, diving dress material and life vest material, etc.



规格参数 Technical Specification:

型号 /Model	合模力/ Clamping force	油缸直径/ Oil cylinder diameter	热板规格/ Platen size	层间距/ daylight	层数/Layer	立柱开档/ Column Span	电机功率/ Motor power
	Ton	mm	mm	mm		mm	kw
XLB-D(Q)250	250	380	800*1000	140	4	1000	7.5
XLB-D(Q)300	300	450	900*1100	150	4	1000	7.5
XLB-D(Q)500	500	560	1000*1200	150	4	1300	11
XLB-D(Q)650	650	650	1100*1350	150	6	1400	11
XLB-D(Q)850	850	762	1200*1500	150	6	1600	15
XLB-D(Q)1000A	1000	813	1350*1700	150	6	1800	22
XLB-D(Q)1000B	1000	813	1200*1500	150	6	1500	22
XLB-D(Q)1100	1100	838	1350*1700	150	6	1800	22
XLB-D(Q)1350A	1350	915	1350*1800	180	6	1800	22
XLB-D(Q)1350B	1350	915	1350*1500	150	6	1500	22
XLB-D(Q)1650A	1650	1016	1400*2200	180	6	1800	30
XLB-D(Q)1650B	1650	1016	1500*2400	200	9	2200	30

平板硫化机 Plate Vulcanizing Press



4柱式平板机 4 Column type Press



框式平板机 Frame type Press

技术规格:

型号 Model	合模压力 Clamping force (Ton)	工作压力 Working Pressure (Mpa)	热板规格 Plate size (mm)	热板间距 Plates distance (mm)	最大行程 Max. Stroke (mm)	加热功率 Heating Power (KW)	电机功率 Motor Power (KW)
XLB-D-25T	25	16	300x300	100	250	4.8	3
XLB-D-50T	50	16	400x400	150	300	9	3
XLB-D-63T	63	20	500x500	150	300	12	4
XLB-D-100T	100	20	800x800	200	300	14	3
XLB-D-160T	160	20	750x850	125	600	16	3
XLB-D-200T	200	25	800x800	250	300	20	7.5
XLB-D-315T	315	25	1000x1000	250	300	24	11
XLB-D-500T	500	25	1100x1100	250	350	30	15
XLB-D-630T	630	25	1200x2000	300	350	35	15
XLB-D-1000T	1000	25	1200x1200	300	350	35	18.5
XLB-D-1250T	1250	25	1500x1200	300	400	40	18.5



真空罩式油压成型机 Vacuum Type Oil Hydraulic Molding Machine

适用各类橡胶产品制造，如橡胶衬垫(迫紧)、o型环、键盘垫片、医疗用橡胶制品、骨架油封、雨刷挂条...等
APPLICATIONS: Ideal for the production of making packing O-rings, keyboards, rubber medical products, framework oil seal, etc.



特点 Features

真空罩在4秒钟内即完成650mmHG之真空度以上，对于成型不易，要求精密之成品最为适合。
Vacuum degree can reach to 650mm HG within 4 seconds while the mold in vacuum cover. It is using for difficult molding, high-precision products.

应用 Application

轨道开模 Rail mold-open O型环、迫紧，键盘等。 O-rings, packing, keyboard and so on.

2RT开模 2RT mold-open

滚筒、鞋子、医疗药品塞、汽机车零件，防震用品、垫片、导电用品、电子用品灯精密性应用。

Apply for roller, shoes, pharmaceutical stopper, automobile parts, anti-vibration products, pad, conductive products, and electrical applications and so on.

3RT开模 3RT mold-open

适合三层、四层模具产品特性。
Suitable for 3 and 4 layers mold features.

4RT开模 4RT mold open

适合四层、五层模具产品特性。
Suitable for 4 and 5 layers mold features.



规格型号 Technical Specification:

规格 Model	JC-PV100T	JC-PV150T	JC-PV200T	JC-PV250T	JC-PV350T	JC-PV500T
吨位 Tonnage	100T	150T	200T	250T	350T	500T
系统最大压力 Max. system pressure (Mpa)	21	21	21	21	21	21
锁模行程 Clamping stroke	280mm	300mm	300mm	300mm	300mm	300mm
快速锁模速度 Rapid clamping speed	60mm/s	60mm/s	60mm/s	60mm/s	60mm/s	50mm/s
热盘尺寸 Heating plate size	355mm x 430mm	450mm x 480mm	505mm x 510mm	570mm x 610mm	700mm x 700mm	700mm x 700mm; 800mm x 800mm; 950mm x 800mm
最大开档 Daylight (mm)	300mm	300mm	300mm	300mm	300mm	350mm
热板最高温度 Max. temperature	250°C	250°C	250°C	250°C	250°C	250°C
真空罩行程 Vacuum cover travel	150mm	150mm	150mm	150mm	150mm	150mm
最大顶出力 Max ejector force	60KN	60KN	60KN	60KN	100KN	100KN
顶出机构 (选配) Optional	2RT/3RT/4RT	2RT/3RT/4RT	2RT/3RT/4RT	2RT/3RT/4RT	2RT/3RT/4RT	2RT/3RT/4RT
顶出行程 Ejector stroke	250MM	250MM	250MM	250MM	250MM	250MM
液压电机功率 Motor power	11.0KW	11.0KW	11.0KW	11.0KW	13.0KW	13.0KW
加热功率 Heating power	12.0KW	15.3KW	15.3KW	18.6KW	20.6KW	27.8KW
机械外型尺寸 (mm) Machine size (mm)	2100x3200x2400	2200x3500x2600	2200x3500x2800	2500x3800x3000	2850x4000x3200	3100x4200x3400
油箱容积 Oil tank capacity	350L	370L	500L	520L	670L	800L

橡胶自动射出成型机 Rubber Injection Molding Machine



应用 Application

此系列机型适用于NR.SBR.BR.NBR.HR.URETHANE RUBBER等原料制品。如汽车用减震件、汽车用防尘罩、橡胶杂件、轮胎胶囊、实心轮胎、橡胶护、橡胶电子零件.....

This series type is suitable for raw material products, such as NR, SBR, BR, NBR, HR, and URETHANE RUBBER, etc.

特点 Features

P.L.C. 可程式控制器 Human Machine interface
入料、射料采用自动控温 The charge unit automatically controller temperature.

胶料系直压射出，采用三段压力，四段流量控制 The injection unit uses a hydraulic direct in 3 stages of pressure and 4 stages of flow.

注射系统 Injection system

设有四段注射速度和注射压力，三段保压，满足了不同胶料对注射条件的要求，精密的电子位置及合理注射直径使注射精度更为精确。

With injection pressure and injection speed, three pressing, it can meet the different compound of the requirements to making more precise precision injection, and precise location of the electronic device, and the reasonable injection plunger diameter.

顶出装置 Ejection device

针对不同制品，可选择不同的顶出力及速度，使成品取出更为方便。

Different products, different choices of the top output and speeds. It makes more convenient for product removal.

合模系统 Die-filled system

锁模力采用充液式快速合模系统，锁模由主油缸直接完成，速度快，转换平稳。

Clamping force has a rapid die-filled system, and clamping directly complete, fast, and smooth conversion from the main fuel tank.

温度控制 Temperature control

采用导热油加热、水冷却回路。

精确控制储料和射出段温度。

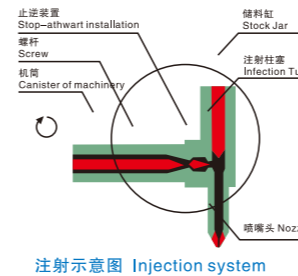
Using HTF heating, and looping cooling water.

Reserve materials and precise control of temperature injection.

安全保护 Security protection

配有光电安全保护装置，确保操作者的安全。具有低压锁模保护功能，防止模具损坏。

With a photoelectric device security protection, it ensures the safety of the operator. It can prevent mold damage with a low voltage clamping protection.



注射示意图 Injection system

规格型号/Technical Specification:

机型 Model	Unit	YQSL50	YQSL200	YQSL260	YQSL300	YQSL400	YQSL580	YQSL700
射胶量 Shot Volume	C.C	300	(1000)~1500	(1500)~2000	(2000)~3000	(3000)~5000	(3000)~5000	(5000)~10000
射胶压力 Injection pressure	Kg/cm2	1700-1800	1700-1800	1700-1800	1700-1800	1700-1800	1700-1800	1700-1800
射胶油压压力 Injection Hydraulic pressure	Kg/cm2	150	150-160	150-160	150-160	150-160	150-160	150-160
螺杆直径 Screw Diameter	mm	32	45	45	50	50	50	50
螺旋转速 Screw Speed	Rpm/min	0-120	0-120	0-120	0-120	0-120	0-120	0-120
原料尺寸 Material Size	mm	10 x 30	12 x 50	12 x 50	15 x 60	15 x 60	15 x 60	15 x 60
锁模力 Clamping Force	TON	60	200	260	300	400	580	700
活塞行程 Piston Stroke	mm	360	460	580	510	510	650	700
盘面尺寸 Platen size	mm	350 x 380	480 x 500	520 x 580	650 x 730	750 x 800	700 x 720	750 x 900
大柱内距(左右) Space Between Bar	mm	445	575	645	790	930	805	910
活塞直径 Piston diameter	mm	180	356	406	430	500	600	657
马达 Motor	kw	5.5	11	15	18.5	18.5	22	37
电热 Electric heating	kw	7.2	13.6	16	19	19.6	23.2	30.4
热煤油泵 Thermal Oil Pump	hp	1/2 x 1	1/2 x 2	1/2 x 2	1/2 x 2	1/2 x 2	1/2 x 2	1/2 x 2
系统压力 System pressure	Kg/cm2	210	210	210	210	210	210	210
机械尺寸 Dimension	mm	2275 x 1705 x 2900	3610 x 2000 x 3730	2750 x 2130 x 3780	2900 x 2355 x 4400	3075 x 2575 x 4470	3020 x 2422 x 4335	3200 x 2465 x 5100
机械重量 Weight	kg	2300	5800	6800	8500	8500	10500	14000



硅胶自动射出成型机Silicone Injection Molding Machine

JDS系列

应用 Application

此系列机型适用于固态硅胶原料的制作，如硅、橡胶绝缘子、电缆附件、硅橡胶电子零件、医用硅橡胶制品等……

Excellent design for the production of solid silicon material only.

特点 Features

- P.L.C.可程式控制器

Equipped with standard P.L.C. controller

- 人机界面

Human Machine interface

- 入料、射料采用自动控温

The charge unit adopts an automatic temperature

- 胶料系直压射出、采用三段压力、四段流量控制

The injection unit uses a hydraulic direct drive in 3 stages of pressure and 4 stages of flow



规格型号Technical Specification:

机型	Model	Unit	RH50-250 CC	RH65-250 CC	RH200-1000CC(A)	RH200-1000CC(B)	RH260-1500CC	RH300 (A)	RH300 (B)
射胶量	Shot Volume	C.C	300	300	(1000)~1500	(1000)~1500	(1500)~2000	(2000)~3000	(2000)~3000
射胶压力	Injection pressure	Kg/cm2	1700-1800	1700-1800	1700-1800	1700-1800	1700-1800	1700-1800	1700-1800
射胶油压压力	Injection oil pressure	Kg/cm2	150	150	150-160	150-160	150-160	150-160	150-160
螺杆直径	Screw Diameter	mm	32	32	45	45	45	50	50
螺旋转速	Screw Speed	Rpm/min	0-120	0-120	0-120	0-120	0-120	0-120	0-120
原料尺寸	Material Size	mm	10 x 30	10 x 30	12 x 50	12 x 50	12 x 50	15 x 60	15 x 60
锁模力	Clamping Force	TON	60	60	200	200	260	300	300
活塞行程	Piston Stroke	mm	360	370	460	460	580	510	510
盘面尺寸	Platen size	mm	350 x 380	290 x 320	480 x 500	550 x 620	520 x 580	650 x 730	550 x 650
大柱内距(左右)	Space Between Tie Bar	mm	445	390	575	675	645	790	690
活塞直径	Piston diameter	mm	180	200	356	356	406	430	430
马达	Motor	kw	5.5	5.5	11	11	15	18.5	18.5
电热	Electric heating	kw	7.2	7.2	13.6	13.6	16	19	18
热煤油泵浦	Thermal Oil Pump	hp	1/2 x 1	1/2 x 1	1/2 x 2	1/2 x 2	1/2 x 2	1/2 x 2	1/2 x 2
系统压力	System pressure	Kg/cm2	210	210	210	210	210	210	210
机械尺寸	Dimension	mm	2275 x 1705 x 2900	2135 x 1240 x 2870	3610 x 2000 x 3730	2275 x 2095 x 3715	2750 x 2130 x 3780	2900 x 2355 x 4400	3000 x 2345 x 4470
机械重量	Weight	kg	2300	2200	5800	6500	6800	8500	7500

橡胶鞋底自动成型机Automatic rubber sole molding press



简介:

- 1、此系列机械材质采用C45铸造高级钢板一体成型,不断裂,不变形。
 - 2、液压件选用世界知名品牌的产品,采用电脑控制,可分别独立操作。
 - 3、机台动作速度快、静音、运作顺畅。
 - 4、换气次数、脱气时间可自由设定,且均能手动测试调整。操作调整均甚便捷。
 - 5、泄压、脱气、下降等动作皆能独立调整,或全程先设定为自动连续式动作。
 - 6、液压集中控制,配管少,分析管亦少,另附冷却器,油温和压力永保恒定,不易漏油,延长机台使用寿命。
 - 7、设紧急下降开关,瞬间触动即能紧急停车及下降以保护人员、模具及成品之安全。
1. The machine body is made of high strength steel castings, not broken, no distortion, extended machine life.
 2. The machine adopts PLC control system can operate independently, thereby increasing production capacity.
 3. Hydraulic control system, adopt international famous brand components, improving mechanical performance.
 4. Peripheral emergency button in order to ensure safety of the operator, as well as the mold is not damaged.
 5. Each station vulcanization time and movement program can be arbitrarily set by the interface, easy to operate.

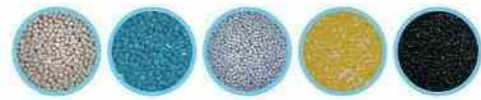
规格型号Technical Specification:

项目/Items	单位Unit	型号: HM-138
模板尺寸 mold plate size	mm	470 x 470
模板数 Mould plate quantity		2 x 6 (2 x 8)
电机功率 Motor power	HP	20
合模力 Clamping force	Ton	150
机械尺寸 Dimension	mm	8110 x 1560 x 2080
重量 Weight	kg	10500



EVA、TPR、PVC、PE/PP色母粒、低烟无卤阻电缆料高速造粒生产线 High Speed Kneader&Extruder Pelletizing Line

Rubber, PVC/TPR/EVA two-shaft hi-speed granulator (air cooling)
PVC/TPR/EVA造粒機ライン(風冷式)



风冷Air Cooling



雙錐
Conical-feeder



水环切粒Water Ring Cooling

简介：本生产线集混炼、输送、喂料、挤出造粒，风送热切冷却于一体，实现自动化连续作业，生产效率高。生产过程进行分段闭环温度控制，密炼、喂料、挤出机等有各自加热、冷却系统，根据工艺要求控制各自温度。喂料机构采用螺旋浆双挽式，吃料能力强。特别适用于直接经密炼机混炼的团状物料挤出造粒。机筒螺杆均采用38CrMoAlA优质合金钢，经氮化处理，硬度高，耐磨耐腐蚀。机头采用手动换网或快速不停机自动换网机构，提高生产效率。电控系统采用先进的PLC控制技术，与多台变频器组成，使喂料、挤出、切粒等多机台按工艺要求进行高精度、广范围的无级调速。并具有全机工艺连锁，声光故障报警等功能控制，完善可靠。

Application fields:

EVA, TPR, rubber cable granules, EVA external shielding materials, PVC cable granules, LSZH cable granules, plastic film masterbatch, XPE foam sheet particles, highly filled PE/PP masterbatch, high concentrations of black and white masterbatch, functional masterbatch, masterbatch, ABS, sulfur masterbatch, rubber masterbatch, all kinds of rubber and plastic products, etc.

The production line combines materials internal mixing, conveying, feeding, extrusion granulation, water circulation cooling and air cooling sending as a whole line, automated continuous operation, the high effective production.

Production sub-loop temperature control process, dispersion kneader, feeder, extrusion machine has its own heating and cooling system, controlling their temperature according to process requirements.

Granules palletized from this line are with the features of beautiful appearance, fine texture, well distributed.

EVA、TPR、PVC、PE/PP色母粒、低烟无卤阻电缆料高速造粒生产线 High Speed Kneader&Extruder Pelletizing Line

规格型号Technical Specification:

型号/Model	MD-100/35	LMD-120/55	LMD-130/75	LMD-165/110	LMD-200/110L
挤出产量/ Capacity (KG/H)	150-200	200-300	400-600	500-800	600-1000
螺杆直径 Screw Diameter	100mm	120mm	130mm	165mm	200mm
螺杆长径比 Screw L/D ration	12/16/20:1	12/16/20:1	12/16/20:1	12/16/20:1	12/16/20:1
挤出机电机/ Extruder Motor (KW)	37	45	55	75/90	110/160
温控段 Temperature control stages	4	4	4	4	4
双腕喂料功率 Double Arm Feeding power (KW)	5.5	7.5	7.5	7.5/11	11
锥双喂料功率 Conic feeder power(KW)	11	11	11	11/15	15
Die cutting power (KW)	2.2	2.2	2.2	2.2	2.2
冷却系统功率 Cooling system power(KW)	3	3	5.5	7.5	11
振动筛网孔径 Vibrator sieve diameter(mm)	2.5/3	2.5/3	2.5/3	2.5/3	2.5/3
脱水机功率 Vibrator sieve diameter (KW)	7.5	7.5	7.5	7.5	11
料仓容量 Storage bin	1000L	1000L	1000L	1500L	2000L
配套密炼机 Suitable Kneader model	X(S)N-35L	X(S)N-55L	X(S)N-75L	X(S)N-110L	X(S)N-110L



同向平行双螺杆挤出机 Parallel Co-rotating Twin Screw Extruder

同向平行双螺杆挤出机机筒，螺杆采用积木式原理设计制造。根据加工物料体系与工艺配方要求，其长径比、机筒结构、螺杆排列、换网结构、排气数量位置、加料方式、电气控制方式等，均可优化合理配置。实现多功能、多用途来适应加工高分子材料。

传动箱已升级为新型超高扭矩型，其扭矩等级达到国际一流水平。

主要用途：填充改性、橡塑共混、塑料合金、色母粒、阻燃母粒、可降解塑料、抗静电母料、抗菌母粒等、玻纤（碳纤）增强、热塑性弹性体、电缆料、反应挤出、排气脱挥后处理、氟橡胶、顺丁橡胶等高分子材料的生产与应用。

双螺杆挤出机使用范围

填充改性，如PE、PP、ABS、PC、EVA等填充CaCO₃、Talc、TiO₂等；

橡塑共混、塑料合金，如PC+ABS、PA+EPDM、PBT+PET、PP+NBR等；

色母粒，如PE、PP、ABS、PC、EVA、PET等；

阻燃母粒、可降解塑料、抗静电母料、抗菌母粒等；

玻纤（碳纤）增强，如PA、PP、PC、ABS、PBT、POM+玻纤；

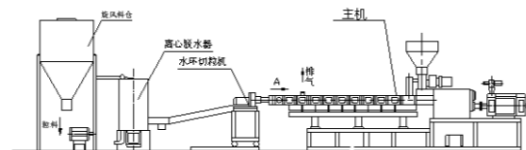
热塑性弹性体，如TPR、TPE、TPV、TPU等；

缆料，PE、PP、EVA、PVC、XLPE；

反应挤出，如PA、PU、POM、PMMA、PC等；

排气脱挥后处理，如CPP、CPE、SBS、EPDM、SEBS、氟橡胶、顺丁橡胶等；

粉末涂料，如环氧型、聚酯型、混合型等。



水环切粒 Water Ring Pelletizing



水拉条切粒 Water Strand Pelletizing



螺杆元件Screw Elements

Suitable for:

- Polymer blending & filling modification
- Engineering polymer & glass fiber reinforcement
- Masterbatch, functional parent granula
- Special material, powder coating material
- Reactive extrusion, degassing & devolatilization

Application for the materials in details:

PE、PP、ABS、PC、EVA+CaCO₃、Talc、TiO₂；
PC+ABS、PA+EPDM、PBT+PET、PP+NBR；
PE、PP、ABS、PC、EVA、PET；
ANTI RETARDANT MASTERBATCH；
DE-COMPOSING MASTERBATCH；
ANTISTATIC MASTERBATCH；
ANTIBACTERIAL MASTERBATCH；
PA、PP、PC、ABS、PBT、POM+GLASS FIBER；
TPR、TPE、TPV、TPU；
PE、PP、EVA、PVC、XLPE；
PA、PU、POM、PMMA、PC；
CPP、CPE、SBS、EPDM、SEBS、FPM、BR；
COATING MATERIALS

Electric control system:

Common instruments control:

- 1) Temperature controller, inverter, breaker, contactor, SSR and control buttons are of foreign famous brand as per customer's option.
 - 2) The PLC control system is adopted to optimize the operations circuit.
 - 3) Control unit like solenoid valve are of European brand.
 - 4) The whole extrusion line has driving & interlock protection, and trouble & interlock protection systems.
 - 5) The simulation displayer is equipped, which can show the running state clearly and dynamically.
- HIMI control:
- 1) Adopt the imported brand such as Omron and Siemens with characters of simplified circuit and safety.
 - 2) Start/Stop of all the motors can be operated on the touch-screen.
 - 3) The operations status of the line can be displayed dynamically.
 - 4) Dynamic curve display, input and save of parameters such as rpm, electric current, temp control and pressure.
 - 5) Presenting the detailed record of warning, document retrieval, and maintenance.
 - 6) Reserve the interface of the bus line, to realize the collections, analyze, save and print data.

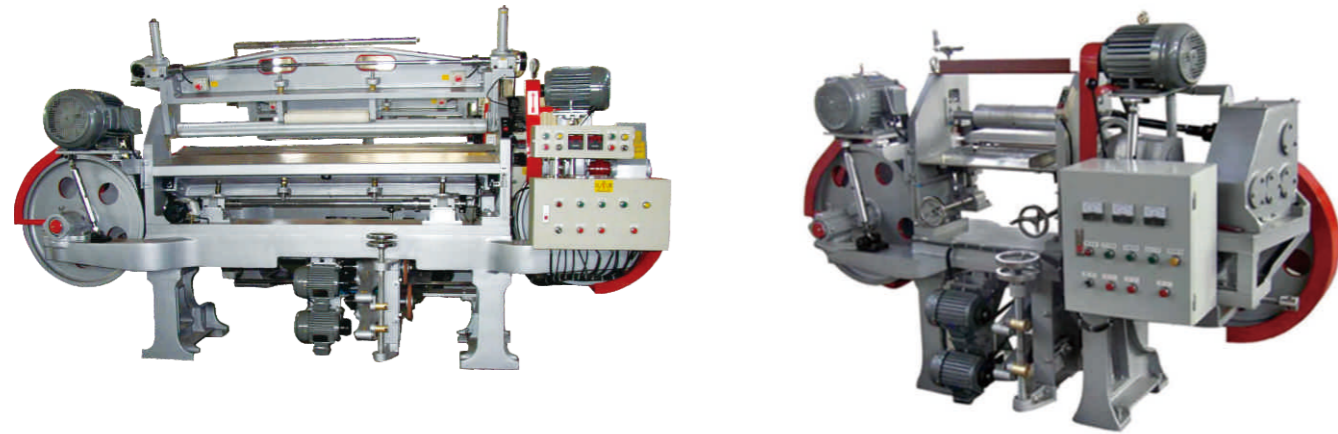
同向平行双螺杆挤出机 Parallel Co-rotating Twin Screw Extruder

MT series co-rotating twin screw extruder						
型号Model	直径(mm)dia	转速 (rpm) speed	长径比L/D	功率(kw)motor	螺杆扭矩 (N.M)torque	生产能力 (kg/h) capacity
MT20	22	600	32-60	3	35	1-5
MT35	35.6	600	32-60	15-18.5	115	10-45
MT-50	50.5	500-600	32-60	37-45	405	100-200
MT-60	59.5	400-500	32-60	55-75	675	200-300
MT-60B	59.5	500-600	32-60	75-90	675	250-600
MT-65	62.4	400-500	32-60	55-75	675	200-300
MT-65B	62.4	500-600	32-60	75-90	1200	250-600
MT-75	71	400-500	32-60	90-110	1005	300-500
MT-75B	71	500-600	32-60	110-162	1875	750-950
MT-95	91	400	32-60	220	2250	750-1250
MT-95	91	500	32-60	500	3740	1000-1250

MTS双阶挤出机 Tandem extruder						
规格Model	分类型号 sep. type	直径 (mm) dia.	转速 (rpm)	长径比 (L/D)	功率(kw)	生产能力 (kg/h) capacity
MTS50-100	MT50	50.5	500	32-40	37	150-300
	MS100	100	85	7-15	22	
MTS65-150	MT65	62.4	400-500	32-40	55-75	400-600
	MS150	150	85	7-15	37	
MTS75-180	MT75	71	400-500	32-40	90-110	600-800
	MS180	180	85	7-15	75	
MTS95-200	MT95	91	400-500	32-40	132-160	800-1200
	Ms200	200	85	7-15	90	



强力开片机 Bandknife Splitting Machine



说明:

本机械适用橡胶发泡软木、PE、EVA等高低发泡加工，速度快、精度高。

机械特性:

1. 180GL上下滚轮的上升或下降的调整为自动控制；操作更为精准
2. 刀座固定在滑座上，开薄片及厚片对开时，刀座的进退方便；刀座在长期使用下所造成的变形，本机调整后即可固定，不会因刀座前进或后退而重新调整
3. 传动轴承采用日本五大原装进口品牌
4. 变速箱及电控组件台湾进口，整机马达皆采用台湾东元品牌

Application:

The machine is applied to splitting the foamed rubber cork, foamed EVA, PE, etc. at a high speed and precision.

Features:

1. Cutter with holder plate is spray welded with tungsten, featuring abrasion resistant, non-deformation and it doesn't clamp the cutter.
2. The speed is controlled through a powerful mechanic gearbox, featuring speedy change without reducing the power, lower failure rate.
3. The splitting thickness is set by the digital switch, featuring high precision.
4. The splitting thickness is set by the digital switch, featuring high precision. The main components, like motor, gear box, drive bearing, electric elements, are all made from Taiwan or Japan brand, with reliable and stable performance, making sure the machine with longer service life.

规格型号 Technical Specification:

型号 Model	剖片宽度 Slicing Width	剖片硬度 Slicing Hardness	剖片厚度 Slicing Thickness	设备重量 Weight	安装尺寸 Dimension	使用功率 Drive Power
LS-60L	500mm	8° ~85°	120mm/60mm	1000 kg	2700 × 950 × 1600	5KW
LS-120L	1000mm	8° ~85°	120mm/60mm	2500 kg	3300 × 1150 × 2100	11KW
LS-180GL(CE)	1700mm	8° ~85°	120mm/60mm	3400 kg	3900 × 1150 × 2100	11KW
LS-220GL	2100mm	8° ~85°	120mm/60mm	3700 kg	4300 × 1150 × 2100	13KW
LS-220GL(CE)	2100mm	8° ~85°	120mm/60mm	3700 kg	4300 × 1150 × 2100	13KW

电热式接片机 (熔接机) EVA&PE Foam Sheet Electrothermal Melt Joining Machine

本机械设备适用PE&EVA高低发泡有限长度板材，以电热熔接方式（不用掺水等任何溶剂），接著成无限长度，以方便后续加工。本机械设备使用玩具沙滩鞋等需要短片多色多样颜色变化的拼色。

This machine is used for the electrothermal melting and bonding (using no adhesives or any hotmelt) of highly and lowly foamed PE and EVA plates, making processings that follow easier. This model is most suitable for the processing of toys, beach sandals, and many others that are bonded with short plates for diverse and multi-color combinations.

规格 Model	加工宽度 Working Width	加工长度 Working Length	加工厚度 Working Thickness	加工硬度 Working Hardness	加工速度 Working Speed	接著率 Bonding Rate
JP-180	600-1800(mm)	10mm at minimum	30-100(mm)	15°-65°	1 piece/min.	over 95%



全套配置 Full Configuration

品名 Unit	规格 Model	面积 Dimensions	重量 Weight	马力 Horse Power	数量 Quantity	备注 Remark
熔切台 Melt-Cutting Machine	1800mm	2260×2420×1500(mm)	800kg	1/2HP	1台 one unit	改良机型 New Design
熔切台 Melt-Cutting Machine	1800mm	3450×2420×1500(mm)	1800kg	5.5HP	1台 one unit	改良机型 New Design
卷收台 Collecting Machine	1800mm	2330×900×2100(mm)	300kg	2HP	1台 one units	卷原材料成卷 Plate material rolling
卷料台车 Maching for Rolling	large	1800×1800×1500(mm)	150kg		2台 two units	依工作量再加数量 Units can be increased according to working volume
卷管 Bending Tube	φ600mm φ450mm	2000×600(mm) 2000×450(mm)	120kg 70kg		2只 two units 1只 one units	依工作量再加数量 Units can be increased according to working volume



捏合机Sigma Kneader



----混炼缸Mixing Cylinder

试验型照片Laboratory:

该机广泛用于塑料、橡胶、硅橡胶、颜料、油墨、胶基、碳素、纤维素、食品、医药等行业。该机拌缸、拌桨均为不锈钢制造，其拌缸夹套内可设计成电加热、汽加热或水冷却形式、出料方式有液压翻缸、螺杆挤出及下出料等形式。

This machine is widely used in plastic, soap, rubber, silicone, paint, printing ink, basoid, carbon, food stuff, medicine etc, Mixing Bowl and agitating valve are all made by stainless steel, The jacket of mixing bowl can be designed into electric heating, steam heating, steam heating or water cooling. Discharge ways as hydraulic tilt, screw extruder and botton discharge etc.

规格参数Technical Specification:

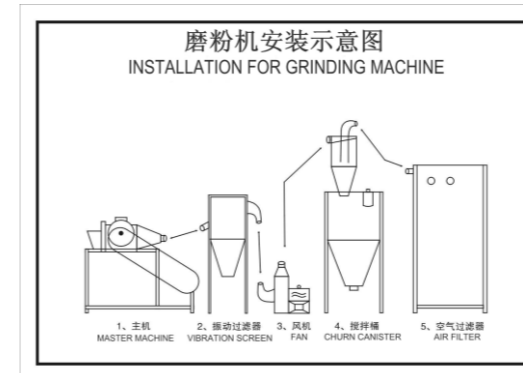
型号 /Model	总容积/ Total Volume (L)	工作容积/ working volume (L)	电动机功率/ Motor power (kW)	出料形式/ Discharge mode	加热方式/ heating type
NH-1	1	0.6	0.75	手动翻缸/manual	蒸汽或电加热/ steam or electric
NH-2	2	1.2	0.75	手动翻缸/manual	蒸汽或电加热/ steam or electric
NH-5	5	3	1.5	手动翻缸/manual	蒸汽或电加热/ steam or electric
NH-10	10	6	2.2	手动翻缸/manual	蒸汽或电加热/ steam or electric
NH-40	40	24	4	手动翻缸/manual	蒸汽或电加热/ steam or electric
NH-100	100	60	7.5 ~ 11	液压翻缸/hydraulic	蒸汽或电加热/ steam or electric
NH-300	300	180	15 ~ 18.6	液压翻缸/hydraulic	蒸汽或电加热/ steam or electric
NH-500	500	300	18.5 ~ 37	液压翻缸/hydraulic	蒸汽或电加热/ steam or electric
NH-1000	1000	600	55 ~ 90	液压翻缸/hydraulic	蒸汽加热/steam
NH-1500	1500	900	55 ~ 160	液压翻缸/hydraulic	蒸汽加热/steam
NH-2000	2000	1200	55 ~ 200	液压翻缸/hydraulic	蒸汽加热/steam
NH-3000	3000	1800	75 ~ 250	液压翻缸/hydraulic	蒸汽加热/steam
NH-4000	4000	2400	110 ~ 300	液压翻缸/hydraulic	蒸汽加热/steam

磨粉机 EVA Grinding Machine (Pulverizer)



EVA、SBR、RB发泡边角料磨粉机无害化、磨粉式的加工工艺”技术，更加节能，环保，节省成本，其合理的流程，先进的技术使EVA、SBR、RB发泡得到循环利用，可达到良好的回收效果。该设备通过金钢砂轮特殊材料高速研磨（EVA、SBR、RB发泡）软性材质，直接将各种边角料、废料研磨成粉末，并通过水循环冷却，保持（EVA、SBR、RB发泡）原有物性，改变了传统的生产工艺及处理方法，可完全回收再利用，大大节省生产成本，提高生产效率，是一种全新的生产工艺的专利设备，操作简单，具有节电、产量高等特点。EVA边角料磨粉机，更加节能，环保，操作更加简洁方便，节省成本，无形中给企业创造出更多的效益。

- 1.The machine suitable for recycle rubber and plastic foam scrap as EVA, SBR, RB, PE, Sponge etc.
- 2.Simple operation, no-crushed, un-extruding and mill the scrap directly.
- 3.Adjustable feed inlet, suitable for each size to feed. Fit silencer to cut down noise.
- 4.Extending feed inlet, have feed drive wheel, operation more safe.
- 5.High-speed and water cooling roller make high production.
- 6.Power grinded under normal temperature keeps its property have better reuse effect.
- 7.New design, easy to install, sample operation.
- 8.Automatic return coarse material.
- 9.New systems, open mode, cooling better effect into powder rate higher.

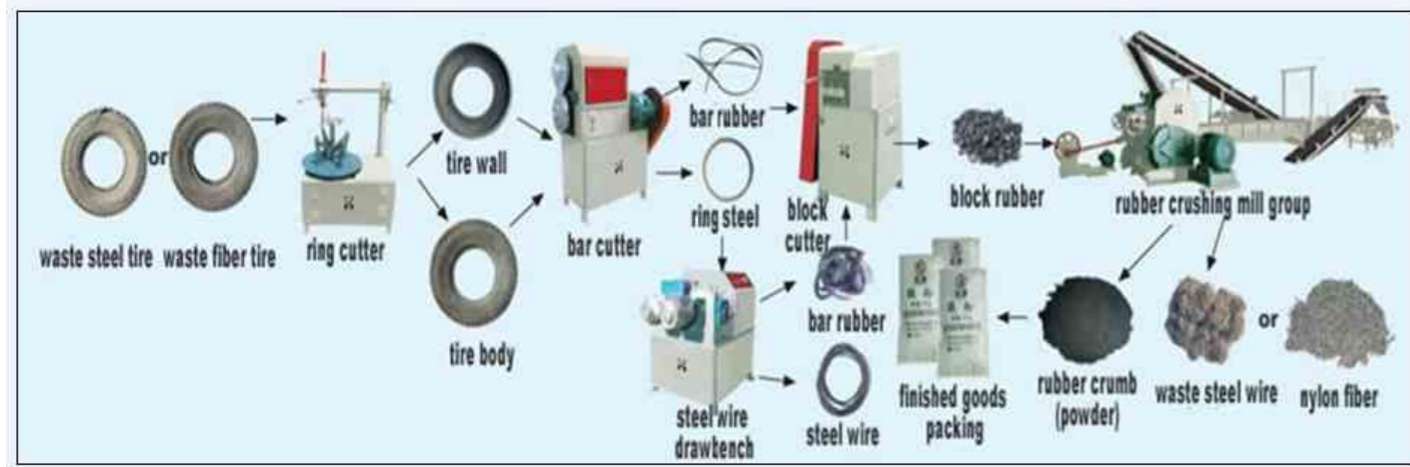


规格型号Technical Specification:

Mode/型号	MF-12
Dimension/安装尺寸	3 × 3 × 4.2m
Net weight/净重	2400kg
Total power/总功率	49.85kw
Production capacity/产量	100-200kg/h
Size of powder/磨粉细度	80-120 mesh



废旧轮胎胶粉设备Rubber power production line from old tire



废旧轮胎胶粉设备由废旧轮胎分解设备及胶粉粉碎、筛分磁选输送机组成。通过废旧轮胎分解设备，先将轮胎加工成3.5厘米见方的小块；再由粉碎机组（XKP400/450/560型）对胶块进行破碎研磨得到钢丝混杂的胶粉、胶粒；然后由胶粉筛分磁选输送机，将钢丝与胎胶分离彻底。通过皮带输送装置经过两道筛床筛选出的细料再经磁辊，磁选分离出钢丝，制取10目-40目细度的纯净胶粉（细度任选）。达不到要求目数细度的胶粉经块料输送机返回粉碎机再次研磨，这种循环研磨工艺技术先进，不需任何化工原料，无废气，无废水，运行费用低。磁选钢丝效果达99%，以XKP450型为例，总装机功率80KW，平均每处理1吨轮胎耗电200度左右，每小时产量为200-400公斤（取得胶粉细度不同，产量亦有不同），是利用钢丝轮胎生产胶粉的最佳设备。

Description:

Waste tire recycling machine: This line mainly consists of mainframe (rubber crusher), powder screener, and magnetic separator.

Step1: Through the decomposition of waste tire by Waste tire breaking down machines set, the tire processed into about 3.5 cm square pieces first;

Step2: By the rubber crusher shredding process to get rubber powder or particles with wire and fiber mixed inside.

Step3: Using the powder vibrating screener, magnetic separator to completely separate wire and fiber and tire rubber powder or granules.

Through the conveyor belt with two sieve beds filter out the fine material and then by magnetic roller, magnetic separation of steel wire and fiber, finally, getting the pure rubber powder.

规格型号Technical Specification:

品名Item	型号model	Roll dia × Roll length (mm)	速比 Roll ratio	Front roll linear speed (M/min)	产量 capacity (Kg/h)	间距Max. gap(mm)	马达 Motor power (KW)	尺寸 Dimension (mm)	重量 Weight (Kg)
破胶机 Rubber crusher	XKP-400	400 × 600	1:1.38	17.16	70~600 (according to power size)	10	45	4210 × 1850 × 1925	7500
粗破机 Rough power crusher	XKC-400	400 × 600	1:1.38	17.16	800	10	45	4210 × 1850 × 1925	7500
破胶机 Rubber crushing mill	XKP-450	450 × 760	1:1.38	23.43	1000	10	55	4550 × 1970 × 1860	11000
破胶机 Rubber crushing mill	XKP-560	510 × 800 560 × 800	1:1.39	27.14	2000	15	75	5620 × 2260 × 1900	16000

产品图片展示



八辊胶片冷却机Drum type rubber cooling machine



水冷式出片机Water Cooling Auto Slicing Machine



液压单刀切胶机 Hydraulic Rubber Bale Cutter



滤胶机Rubber Strainer Machine



产品图片展示



橡胶切条机 Rubber Strip Cutting Machine



真空自动橡胶垫圈切割机 Vacuum Rubber Washer Cutting Machine

产品图片展示



两辊出片机 Two Roll Calender for magnet material sheeting



破胶机 Rubber Crusher



破碎机 Plastic Crusher



贴合机 EVA、SBR Lamination Machine



真空自动油封皮碗修边机
Vacuum oil seal & packing leather Trimmer



高混机 High Speed Mixer



冰箱门封条生产线
Magnet Door Gasket Extrusion Line



斜割机 Bevel Cutting Machine



三轮立切机 (标志型):
Vertical saw cutting machine